



## STAINLESS STEEL ROUND TUBE WORKING TABLE

- Material: Stainless steel 201/304/Galvanized
- S/S Board thickness: 0.8mm/1.0mm/1.2mm
- S/S Tube thickness: 0.8 mm,
- The galvanized tube is 1.3mm
- The second floor is removable everywhere
- Adjustable feet, stainless bullet feet, or plastic bullet feet can be met
- Flat pack delivery



Pipe tube designed



size(mm)	Suitable for Pans	Type 1	
		Item No.	With backsplash (Height +100mm)
600x600x850	100kgs/ layer	301801	302001
800x600x850	100kgs/ layer	301802	302002
1000x600xH850	100kgs/ layer	301803	302003
1200x600xH850	100kgs/ layer	301804	302004
1400x600xH850	100kgs/ layer	301805	302005
1500x600xH850	100kgs/ layer	301806	302006
1600x600xH850	100kgs/ layer	301807	302007
1800x600xH850	100kgs/ layer	301808	805023
2000x600xH850	100kgs/ layer	301809	302009
600x700x850	100kgs/ layer	301901	302101
800x700x850	100kgs/ layer	301902	302102
1000x700xH850	100kgs/ layer	301903	302103
1200x700xH850	100kgs/ layer	301904	302104
1400x700xH850	100kgs/ layer	301905	302105
1500x700xH850	100kgs/ layer	301906	302106
1600x700xH850	100kgs/ layer	301907	302107
1800x700xH850	100kgs/ layer	301908	302108
2000x700xH850	100kgs/ layer	301909	302109





## STAINLESS STEEL ROUND TUBE WORKING TABLE

- Material: Stainless steel 201/304/Galvanized
- S/S Board thickness: 0.8mm/1.0mm/1.2mm
- S/S Tube thickness: 0.8 mm,
- The galvanized tube is 1.3mm
- The second floor is removable everywhere
- Adjustable feet, stainless bullet feet, or plastic bullet feet can be met
- Flat pack delivery



size(mm)	Suitable for Pans	Type 1	
		Item No.	With backslash (Height +100mm)
600x600x850	100kgs/ layer	HVB10201	HVB10101
800x600x850	100kgs/ layer	HVB10202	HVB10102
1000x600xH850	100kgs/ layer	HVB10203	HVB10103
1200x600xH850	100kgs/ layer	HVB10204	HVB10104
1400x600xH850	100kgs/ layer	HVB10205	HVB10105
1500x600xH850	100kgs/ layer	HVB10206	HVB10106
1600x600xH850	100kgs/ layer	HVB10207	HVB10107
1800x600xH850	100kgs/ layer	HVB10208	HVB10108
2000x600xH850	100kgs/ layer	HVB10209	HVB10109
600x700x850	100kgs/ layer	HVB10210	HVB10110
800x700x850	100kgs/ layer	HVB10211	HVB10111
1000x700xH850	100kgs/ layer	HVB10212	HVB10112
1200x700xH850	100kgs/ layer	HVB10213	HVB10113
1400x700xH850	100kgs/ layer	HVB10214	HVB10114
1500x700xH850	100kgs/ layer	HVB10215	HVB10115
1600x700xH850	100kgs/ layer	HVB10216	HVB10116
1800x700xH850	100kgs/ layer	HVB10217	HVB10117
2000x700xH850	100kgs/ layer	HVB10218	HVB10118





## STAINLESS STEEL WORKING TABLE WITH CHROME WIRE RACK



302601

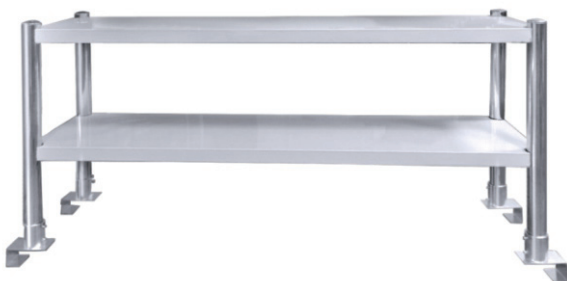


302701



320601

Name	size(mm)	Wire specification	Max Loading	Leg size	Tiers	Item No.
Wire Work Table	1000x600xH900	5.0/3.0/3.0mm	100kgs/ layer	Ø25×1.0mm	2	302601
	1300x600xH900	5.0/3.0/3.0mm	100kgs/ layer	Ø25×1.0mm	2	302602
	1600x600xH900	5.0/3.0/3.0mm	100kgs/ layer	Ø25×1.0mm	2	302603
	1000x700xH900	5.0/3.0/3.0mm	100kgs/ layer	Ø25×1.0mm	3	302701
	1300x700xH900	5.0/3.0/3.0mm	100kgs/ layer	Ø25×1.0mm	3	302702
	1600x700xH900	5.0/3.0/3.0mm	100kgs/ layer	Ø25×1.0mm	3	302703
4 Tier Shely	900x450x1800	5.0/3.0/3.0mm		Ø25×1.0mm	4	320601
	1200x450x1800	5.0/3.0/3.0mm		Ø25×1.0mm	4	320603
	1500x450x1800	5.0/3.0/3.0mm		Ø25×1.0mm	4	320604
	1800x450x1800	5.0/3.0/3.0mm		Ø25×1.0mm	4	320605
	900x600x1800	5.0/3.0/3.0mm		Ø25×1.0mm	4	320606
	1200x600x1800	5.0/3.0/3.0mm		Ø25×1.0mm	4	320608
	1500x600x1800	5.0/3.0/3.0mm		Ø25×1.0mm	4	320609
	1800x600x1800	5.0/3.0/3.0mm		Ø25×1.0mm	4	320610



## S/S TIERS TABLE EXTRA SHELVES

- Expand the space on the table for better layout
- It can be used in a wide range of places and can be equipped with workbenches of different sizes
- Solid structure,max loading 50kgs/ layer

size(mm)	Tiers	Item No.
1000x300xH600	2	302201
1200x300xH600	2	302202
1400x300xH600	2	302203
1500x300xH600	2	302204
1600x300xH600	2	302205
1800x300xH600	2	302206





## STORAGE RACK

- Material: Stainless steel 201, thickness 0.9mm
- Feet: Adjustable
- Use: Home or business
- Packaging: push-down structure
- Customizable size or number of layers



size(mm)	Item No.	Item No.	Item No.	Item No.
1200×500×H1550	320201	320301	320401	320501
1200×600×H1550	320202	320302	320402	320502
1500×500×H1550	320203	320303	320403	320503
1500×600×H1550	320204	320304	320404	320504
1800×500×H1550	320205	320305	320405	320505
1800×600×H1550	320206	320306	320406	320506



## ADJUSTABLE STORAGE RACK



Adjustable shelves distance



Removable PP tray



Suitable for 1/1, 1/2, 2/3, 1/3 GN pan

size(mm)	Item No.
842x370xH1800	320801
1190x370xH1800	320802
1538x370xH1800	320803
1886x370xH1800	320804



## NEW MODEL BOARD STYLE STORAGE RACK

size(mm)	Item No.
800x400x1800	302901
1000x400x1800	302902
1200x400x1800	302903
1400x400x1800	302904
1000x500x1800	302905
1200x500x1800	302906
1400x500x1800	302907
1000x600x1800	302908
1200x600x1800	302909







## ELEVATING WORKING TABLE

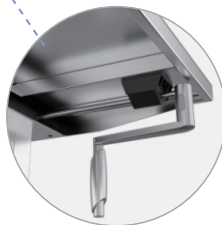
- Material: made of SS201/SS304 table top and iron feet with coating
- Adjustable feet of 710-1020mm

Heavybao Patent Design

- ★ Have unique innovation and exclusivity in terms of technology, structure, appearance.
- ★ Enjoy exclusive legal protection in the market.

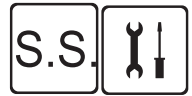


HLB-118



HLB-116

size(mm)	Adjustable Height	Item No.
1200x700	720-1020mm	HLB-116
1400x700	720-1020mm	HLB-117
1200x700	720-950mm	HLB-118



HLB-119



## STAINLESS STEEL ELEVATING WORKTABLE

- Material-----Mainly made from S/S304
- Features-----1.S/S material ,Corrosion resistant,sturdy and easy to clean  
2.Stable support,reasonable structural design offer the smoothy liftingprocess,safe and reliable to use  
3.Double layer structure,provide the storage spareand improve space utilization  
4.Operation (Patent design): Manual handling,no need any electricity  
5.SLifting Function (Patent design)Humanization design to switch the mostsuitable&com-  
fortable operating position and promote healthy work to reducethe strain on your feet,  
knees, hips and back from working standing up!  
6.Hide-able Handle: Can be hidden when not in use,keeping the appearance sleekand  
preventing bumps and enhancing space tidiness
- Max loading capacity-----100kg
- Certificate-----LFGB
- Legs-----Outside:50x50mm / Inside:38x38mm



Workbench that lets you easily adjust the height using the built-in hand crankfunction for an ergonomic work position. The workbench is sturdy with a durableworktop and is suitable for use in lighter industrial operations, warehouses orthe like.

- Package-----Flat pack delivry,brown export carton

size(mm)

Adjustable Height

Item No.

1400x700

720-950mm

HLB-119





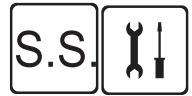
## SINGLE LAYER WORKING TABLE

- Material: Stainless steel 201/304/ Galvanized
- S/S Board thickness: 0.8mm/1.0mm/1.2mm
- S/S Tube thickness: 0.8 mm,
- Adjustable feet, stainless bullet feet, or plastic bullet feet can be met
- Flat pack delivery



size(mm)	Max Loading	Single Layer	With backslash (Height +100mm)	With backslash+ 2.5mm cutting board (Height +100mm)
600x600xH850	100kgs/ layer	300601	300601B	300601BC
800x600xH850	100kgs/ layer	300602	300602B	300602BC
1000x600xH850	100kgs/ layer	300603	300603B	300603BC
1200x600xH850	100kgs/ layer	300604	300604B	300604BC
1400x600xH850	100kgs/ layer	300605	300605B	300605BC
1500x600xH850	100kgs/ layer	300606	300606B	300606BC
1600x600xH850	100kgs/ layer	300607	300607B	300607BC
1800x600xH850	100kgs/ layer	300608	300608B	300608BC
2000x600xH850	100kgs/ layer	300609	300609B	300609BC
600x700x850	100kgs/ layer	300611	300611B	300611BC
800x700x850	100kgs/ layer	300612	300612B	300612BC
1000x700xH850	100kgs/ layer	300613	300613B	300613BC
1200x700xH850	100kgs/ layer	300614	300614B	300614BC
1400x700xH850	100kgs/ layer	300615	300615B	300615BC
1500x700xH850	100kgs/ layer	300616	300616B	300616BC
1600x700xH850	100kgs/ layer	300617	300617B	300617BC
1800x700xH850	100kgs/ layer	300618	300618B	300618BC
2000x700xH850	100kgs/ layer	300619	300619B	300619BC





## DOUBLE LAYER WORKING TABLE



- Material: Stainless steel 201/304/ Galvanized
- S/S Board thickness: 0.8mm/1.0mm/1.2mm
- S/S Tube thickness: 0.8 mm,
- Adjustable feet, stainless bullet feet, or plastic bullet feet can be met
- Flat pack delivery



size(mm)	Max Loading	Double Layer	With backsplash (Height +100mm)	With backsplash+ 2.5mm cutting board (Height +100mm)
600x600xH850	100kgs/ layer	300701	300701B	300701BC
800x600xH850	100kgs/ layer	300702	300702B	300702BC
1000x600xH850	100kgs/ layer	300703	300703B	300703BC
1200x600xH850	100kgs/ layer	300704	300704B	300704BC
1400x600xH850	100kgs/ layer	300705	300705B	300705BC
1500x600xH850	100kgs/ layer	300706	300706B	300706BC
1600x600xH850	100kgs/ layer	300707	300607B	300707BC
1800x600xH850	100kgs/ layer	300708	300708B	300708BC
2000x600xH850	100kgs/ layer	300709	300709B	300709BC
600x700x850	100kgs/ layer	300710	300710B	300710BC
800x700x850	100kgs/ layer	300711	300711B	300711BC
1000x700xH850	100kgs/ layer	300712	300712B	300712BC
1200x700xH850	100kgs/ layer	300713	300713B	300713BC
1400x700xH850	100kgs/ layer	300714	300714B	300714BC
1500x700xH850	100kgs/ layer	300715	300715B	300715BC
1600x700xH850	100kgs/ layer	300716	300716B	300716BC
1800x700xH850	100kgs/ layer	300717	300717B	300717BC
2000x700xH850	100kgs/ layer	300718	300718B	300718BC







## FOLDABLE WORK TABLE

- Material: Domestic SS 201 Top + wood
- Board thickness: 0.8mm
- Tube thickness: 1.0mm
- Adjustable feet
- Pcs/Ctn: 1



size(mm)	Max Loading	Item No.
700x700x850	100kgs/layer	300901
1000x700x850	100kgs/layer	300902
1200x700x850	100kgs/layer	300903
1400x700x850	100kgs/layer	300904
1500x700x850	100kgs/layer	300905
600x600x850	100kgs/layer	300906
1000x600x850	100kgs/layer	300907
1200x600x850	100kgs/layer	300908
1400x600x850	100kgs/layer	300909
1500x600x850	100kgs/layer	300910

## WORKING TABLE WITH DRAWERS



2drawers



3 drawers



2drawers  
with backsplash



3 drawers  
with backsplash

size(mm)	Max Loading	Qty of drawers	Item No.	With backsplash
1000x700xH850	100kgs/layer	2	300801	300801B
1200x700xH850	100kgs/layer	2	300802	300802B
1400x700xH850	100kgs/layer	2	300803	300803B
1600x700xH850	100kgs/layer	2	300804	300804B
1800x700xH850	100kgs/layer	2	300805	300805B
1600x700xH850	100kgs/layer	3	300811	300811B
1800x700xH850	100kgs/layer	3	300812	300812B

## CORNER WORKBENCH



300501



300503

size(mm)	Adjustable Height	Item No.
900x900xH850	For600mm work table	300501
900x900xH850	For700mm work table	300502
900x900xH850+100	For600mm work table	300503
900x900xH850+100	For700mm work table	300504





## CABINET



size(mm)	Cabinet	With backsplash
1000x 600 x 850	340101	340101B
1200 x 600 x 850	340102	340102B
1400 x 600 x 850	340103	340103B
1500 x 600 x 850	340104	340104B
1600 x 600 x 850	340105	340105B
1800 x 600 x 850	340106	340106B
2000 x 600 x 850	340107	340107B
1000 x 700 x 850	340111	340111B
1200 x 700 x 850	340112	340112B
1400 x 700 x 850	340113	340113B
1500 x 700 x 850	340114	340114B
1600 x 700 x 850	340115	340115B
1800 x 700 x 850	340116	340116B
2000 x 700 x 850	340117	340117B



## CABINET WITH DRAWERS



size(mm)	Cabinet	With backsplash
1500x600x850	340301	340301B
1600x600x850	340302	340302B
1800x600x850	340303	340303B
2000x600x850	340304	340304B
1500x700x850	340305	340305B
1600x700x850	340306	340306B
1800x700x850	340307	340307B
2000x700x850	340308	340308B

ELECTRIC CABINET



With backplash  
(Height +100mm)

size(mm)	Item No.	With backplash
1000x600x850	340201	340201B
1200x600x850	340202	340202B
1400x600x850	340203	340203B
1500x600x850	340204	340204B
1600x600x850	340205	340205B
1800x600x850	340206	340206B
2000x600x850	340207	340207B
1000x700x850	340208	340208B
1200x700x850	340209	340209B
1400x700x850	340210	340210B
1500x700x850	340211	340211B
1600x700x850	340212	340212B
1800x700x850	340213	340213B
2000x700x850	340214	340214B

WALL CABINET



With door

size(mm)	Item No.	With door
600x400x650	340401	340401D
800x400x650	340402	340402D
1000x400x650	340403	340403D
1200x400x650	340404	340404D
1400x400x650	340405	340405D
1500x400x650	340406	340406D
1600x400x650	340407	340407D
1800x400x650	340408	340408D
2000x400x650	340409	340409D



## SINGLE LAYERS WASH BASIN-ROUND TUBE



Designation	size(mm)	Sink Size (mm)	Item No.
1 bowl	600x600xH850+100	400x400x250	310101
1 bowl	650x650xH850+100	400x400x250	310102
1 bowl	700x700xH850+100	500x500x300	310103
2 bowl	1000x600x850+100	400x400x250	310201
2 bowl	1100x600x850+100	400x400x250	310202
2 bowl	1200x700x850+100	500x500x300	310203
1 bowl+right drainer	1000x600x850+100	400x400x250	310301
1 bowl+right drainer	1100x600x850+100	400x400x250	310302
1 bowl+left drainer	1200x700x850+100	500x500x300	310303
3 bowl	1500x600x850+100	400x400x250	310401
3 bowl	1600x600x850+100	400x400x250	310402
3 bowl	1800x600x850+100	500x500x300	310403
2 bowl+right drainer	1500x600x850+100	400x400x250	310404
2 bowl+left drainer	1600x600x850+100	400x400x250	310405
2 bowl+left drainer	1800x600x850+100	500x500x300	310406

## WASH BASIN FOR THE WASHER



with under shelf

with cabinet

Designation	size(mm)	Sink Size (mm)	Item No.	
			with under shelf	with cabinet
1 bowl+right drainer	1200x600x850+100	400x400x250	321101	321311
1 bowl+left drainer	1400x600x850+100	500x400x250	321103	321312
1 bowl+right drainer	1200x600x850+100	500x400x250	321111	
1 bowl+right drainer	1200x700x850+100	400x500x250	321112	321313
1 bowl+right drainer	1400x700x850+100	500x500x250	321123	321314
2 bowl+right drainer	1600x600x850+100	400x400x250	321202	321411
2 bowl+left drainer	1800x600x850+100	500x400x250	321213	321412
2 bowl+left drainer	2000x600x850+100	500x400x250	321214	321413
2 bowl+right drainer	1600x700x850+100	400x500x250	321222	321421
2 bowl+left drainer	1800x700x850+100	500x500x250	321223	321422
2 bowl+left drainer	2000x700x850+100	500x500x250	321224	321423

## CABINET WITH DRAWERS SINK



340101BS



340301BS

	Designation	size(mm)	Sink Size (mm)	Item No.	With Drawers
	1 bowl+right drainer	1000x 600 x 850	400x400x250	340101BS	
	1 bowl+right drainer	1200 x 600 x 850	400x400x250	340102BS	
	1 bowl+left drainer	1400 x 600 x 850	400x400x250	340103BS	
	1 bowl+right drainer	1500 x 600 x 850	400x400x250	340104BS	340301BS
	1 bowl+right drainer	1600 x 600 x 850	400x400x250	340105BS	340302BS
	1 bowl+left drainer	1800 x 600 x 850	400x400x250	340106BS	340303BS
	1 bowl+right drainer	2000 x 600 x 850	400x400x250	340107BS	340304BS
	1 bowl+right drainer	1000 x 700 x 850	500x500x300	340111BS	
	1 bowl+left drainer	1200 x 700 x 850	500x500x300	340112BS	
	1 bowl+right drainer	1400 x 700 x 850	500x500x300	340113BS	
	1 bowl+left drainer	1500 x 700 x 850	500x500x300	340114BS	340305BS
	1 bowl+right drainer	1600 x 700 x 850	500x500x300	340115BS	340306BS
	1 bowl+right drainer	1800 x 700 x 850	500x500x300	340116BS	340307BS
	1 bowl+left drainer	2000 x 700 x 850	500x500x300	340117BS	340308BS

## DOUBLE LAYERS WASH BASIN-SQUARE TUBE



310701



310501



310901



310801

	Designation	size(mm)	Sink Size (mm)	Item No.
	1 bowl+right drainer	600x600xH850+100	400x400x250	310501
	1 bowl+right drainer	650x650xH850+100	400x400x250	310502
	1 bowl+left drainer	700x700xH850+100	500x500x300	310503
	1 bowl+right drainer	1200x700xH850+100	1060x500x300	310504
	1 bowl+right drainer	1500x700xH850+100	1350x500x300	310505
	1 bowl+left drainer	1500x600xH850+100	1350x400x300	310506
	1 bowl+right drainer	1000x600x850+100	400x400x250	310601
	1 bowl+right drainer	1100x600x850+100	400x400x250	310602
	1 bowl+left drainer	1200x700x850+100	500x500x300	310603
	2 bowl	1000x600x850+100	400x400x250	310701
	2 bowl	1100x600x850+100	400x400x250	310702
	2 bowl	1200x700x850+100	500x500x300	310703
	3 bowl	1500x600x850+100	400x400x250	310801
	3 bowl	1600x600x850+100	400x400x250	310802
	3 bowl	1800x600x850+100	500x500x300	310803
	2 bowl+right drainer	1500x600x850+100	400x400x250	310901
	2 bowl+left drainer	1600x600x850+100	400x400x250	310902
	2 bowl+left drainer	1800x600x850+100	500x500x300	310903



## DOUBLE LAYERS WASH BASIN-SQUARE TUBE



311501

size(mm)	Sink Depth(mm)	Item No.
600x600x850	300	311501
800x600x850	300	311502
1000x600x850	300	311503
1200x600x850	300	311504

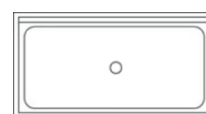
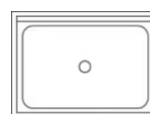


311505

size(mm)	Sink Depth(mm)	Item No.
600x700x850	300	311505
800x700x850	300	311506
1000x700x850	300	311507
1200x700x850	300	311508



312501



size(mm)	Sink Depth(mm)	Item No.
800x600x850	400	312501
1000x600x850	400	312502
800x700x850	400	312503
1000x700x850	400	312504



## SINK TABLE TOP



### 600mm width

	Designation	Product size(mm)	Sink Size (mm)	Item No.
	1 bowl	600x600x3350	400x400x250	322101
	1 bowl+right drainer	1000x600x3350	400x400x250	322102
	1 bowl+left drainer	1200x600x3350	400x400x250	322103
	1 bowl+right drainer	1400x600x3350	400x400x250	322104
	2 bowl	1000x600x3350	400x400x250	322105
	2 bowl+right drainer	1200x600x3350	400x400x250	322106
	2 bowl+left drainer	1400x600x3350	400x400x250	322107
	2 bowl+right drainer	1500x600x3350	400x400x250	322108
	2 bowl+left drainer	1600x600x3350	400x400x250	322109
	2 bowl+right drainer	1800x600x3350	400x400x250	322110
	2 bowl+left drainer	2000x600x3350	400x400x250	322111
	3 bowl	1500x600x3350	400x400x250	322112
	3 bowl	1600x600x3350	400x400x250	322113
	3 bowl	1800x600x3350	400x400x250	322114
	3 bowl	2000x600x3350	400x400x250	322115

### 700mm width

	Designation	Product size(mm)	Sink Size (mm)	Item No.
	1 bowl	700x700x3350	500x500x300	323101
	1 bowl+right drainer	1000x700x3350	500x500x300	323102
	1 bowl+left drainer	1200x700x3350	500x500x300	323103
	1 bowl+right drainer	1400x700x3350	500x500x300	323104
	2 bowl	1000x700x3350	500x500x300	323105
	2 bowl+right drainer	1200x700x3350	500x500x300	323106
	2 bowl+left drainer	1400x700x3350	500x500x300	323107
	2 bowl+right drainer	1500x700x3350	500x500x300	323108
	2 bowl+left drainer	1600x700x3350	500x500x300	323109
	2 bowl+right drainer	1800x700x3350	500x500x300	323110
	2 bowl+left drainer	2000x700x3350	500x500x300	323111
	3 bowl	1500x700x3350	500x500x300	323112
	3 bowl	1600x700x3350	500x500x300	323113
	3 bowl	1800x700x3350	500x500x300	323114
	3 bowl	2000x700x3350	500x500x300	323115





350501

### A PREPARATION TABLE USED FOR SCRAPPING, SORTING, AND PREWASHING OF DISHWARE.

- Clearing table with scrap block and ring.
- Top shelf for empty rack storage.
- Sloped shelf for 'racks in use'.
- Constructed entirely in 18/10 AISI 304 heavy gauge 12/10 stainless steel.
- Available on wheels if required



350101



350201



350301



350311

size(mm)	Number of layers	Item No.
1800x780xH880	2	350101
1200x780xH880	2	350201
1800x780xH880	2	350202
1700x1150xH880	1	350301
2200x1150xH880	1	350302
2200x1150xH880	1	350303
1700x1150xH880	1	350311
2200x1150xH880	1	350312
2200x1150xH880	1	350313
1070x525xH880	1	350501
1570x525xH880	1	350502
1870x525xH880	1	350503

### SINK NET



### SQUARE SINK



B style: hole on the corner



A style: hole in the middle

size(mm)	Item No.
470x410	310610
470x460	310611
495x390	310612
410x200	310613
410x240	310614
405x515	310615

size(mm)	A style	B style
500x400x250	311201	311301
500x500x250	311202	311302
500x500x300	311203	311303
450x450x250	311204	311304
450x450x300	311205	311305
400x400x250	311206	311306
400x400x300	311207	311307

## FOOT OPERATED HAND WASHING BASIN

- Material : Stainless steel 304 or 201
- Portable and removable design with 2pcs 2" wheel
- Fitted with 2pcs 10-15L barrels , one for stock the clean water one for packing the dirty water



311211



311212



311213

size(mm)	Remark	Item No.
729x520xH1230	With two buckets: 15L	311211
520x459xH1230	With two buckets: 15L	311212
520x459xH1230	without buckets	311213

## KNEE OPERATED WASH BASIN



311101

Sink size:330x232x130



311102

Sink size:350xH:123

size(mm)	Item No.	Remark
400x330xH570	311101D	cold water accessoires
400x330xH570	311101S	warm & cold water accessories
400x400xH225	311102D	cold water accessoires
400x400xH225	311102S	warm & cold water accessories

## Mop Sink



311001

## Kitchen Sink



313001

Size (mm)	Item No.
500x590x900+50	311001
500x500x850+100	313001



325001



326001



326002



326003



327001

## GLASS WASHER

Size (mm)	Item No.
178x168x65	325001
168x158x138	326001
140x130x28	326002
140x130x28	326003
425x230x30	327001
325x177x40	327002
655x215x30	327003



## OIL-WATER SEPARATOR

- Material: stainless steel 304,brushed surface treatment
- Especially for the commercial kitchen used
- For separate the residue , oil and water, environment friendly
- Customized product sizes are available



250001



size(mm)	Item No.
364x250x255(S)	2500058
384x282x292(M)	2500059
414x312x332(L)	2500060
530x325x200mm (1/1 size )	250001
530x325x200mm (2/1 size)	250002



LYC-01/02

## FOLDABLE OIL FILTER CAR

- Material: Thicken stainless steel, Import filter tubing
- This oil filter car can filter out various oil residues, prolong the service life of the oil, and save 30-45% of economic expenses.
- High-quality pure copper oil drain port which is durable, safe and hygienic, also meets safety standards;



LYC-03



size(mm)	V	W	cbm	Item No.
850x415xH615	220-240	550	0.23	LYC-01
905x380xH590	220-240	550	0.22	LYC-02
880x420xH340	220-240	370		LYC-03





## RESTAURANT EXHAUST HOOD

- High grade 201 or 304 stainless steel
- Wall mounted exhaust hood, easy to install.
- Special for the commercial kitchen, widely used in restaurant, hotel, canteen, fast food shops, catering company etc.
- Material & Thickness: SS201 & 1.0mm

size(mm)	Item No.
800*700*450	2022122
1000*700*450	2022123
1200*700*450	2022124
1400*700*450	2022125
1600*700*450	2022126
1800*700*450	2022127
2000*700*450	2022128
2200*700*450	2022129
2400*700*450	2022130
2600*700*450	2022131
2800*700*450	2022132
3000*700*450	2022133
800*900*450	2022134
1000*900*450	2022135
1200*900*450	2022136
1400*900*450	2022137
1600*900*450	2022138
1800*900*450	2022139
2000*900*450	2022140
2200*900*450	2022141
2400*900*450	2022142
2600*900*450	2022143
2800*900*450	2022144
3000*900*450	2022145

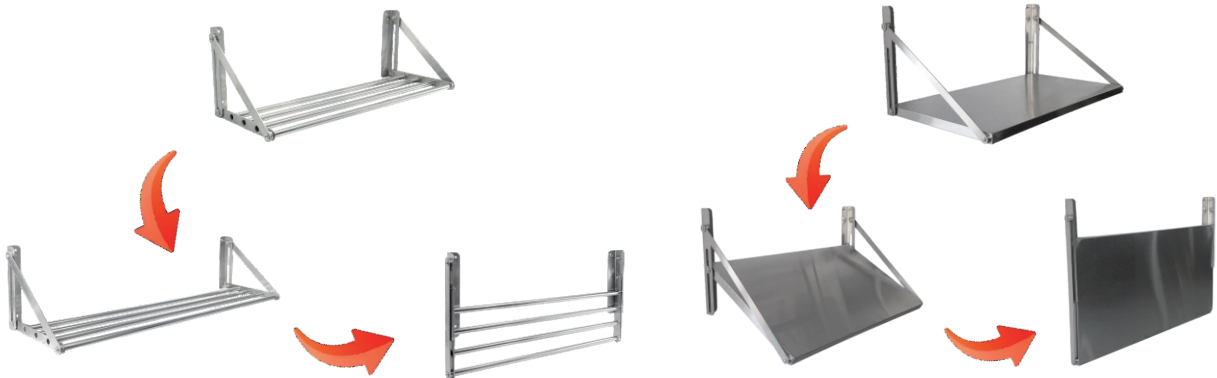




FOLDABLE WALL SHSLF



size(mm)	Item No.	with Backsplash
300*300*2T	331501	331601
400*300*2T	331502	331602
500*300*2T	331503	331603
600*300*2T	331504	331604
700*300*2T	331505	331605
800X*300*2T	331506	331606
900X*300*2T	331507	331607
1000X*300*2T	331508	331608
1100X*300*2T	331509	331609
1200X*300*2T	331510	331610
1300X*300*2T	331511	331611
1400X*300*2T	331512	331612
1500X*300*3T	331513	331613
1600X*300*3T	331514	331614
1700X*300*3T	331515	331615
1800X*300*3T	331516	331616
1900X*300*3T	331517	331617
2000X*300*3T	331518	331618



Tube style

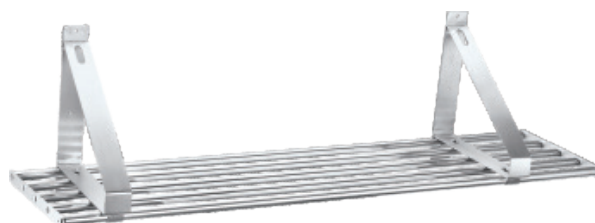
Board style

size(mm)	Tube style	Board style
600X300	331101	330901
800X300	331102	330902
1000X300	331103	330903
1200X300	331104	330904
1400*300	331105	330905
1500*300	331106	330906
1600*300	331107	330907
1800*300	331108	330908
600X450	331009	330909
800X450	331010	330910
1000X450	331011	330911
1200X450	331012	330912
1400*450	331013	330913
1500*450	331014	330914
1600*450	331015	330915
1800*450	331016	330916





## TUBE STYLE WALL SHELF



size(mm)	Model A	Model B
300x600	330301	330201
300x900	330302	330202
300x1200	330303	330203
300x1500	330304	330204
300x1800	330305	330205
300x2000	330306	330206

## PAPER RAIL



size(mm)	Item No.
300x80	331301
500x80	331302
600x80	331306
800x80	331303
1000x80	331304
1200x80	331305

## BOARD STYLE WALL SHELF



size(mm)	Model A	Model B	Model C
300x600	330101	330601	331201
300x900	330102	330602	331202
300x1200	330103	330603	331203
300x1500	330104	330604	331204
300x1800	330105	330605	331205
300x2000	330106	330606	331206





## SPICE SHELVES FOR GN 1/6 (NOT INCLUDE THE GN PAN)



Railway design for hanging the GN pan



Front view of packing the GN

Size(mm)	Suitable for Pans	Item No.
800×300	Fit 1/6 GN Pan 4 pcs	330801
1000×300	Fit 1/6 GN Pan 5 pcs	330802
1200×300	Fit 1/6 GN Pan 6 pcs	330803
1400×300	Fit 1/6 GN Pan 6 pcs	330804
1500×300	Fit 1/6 GN Pan 7 pcs	330805
1600×300	Fit 1/6 GN Pan 7 pcs	330806
1800×300	Fit 1/6 GN Pan 8 pcs	330807

## SPICE SHELVES FOR GN 1/6 (NOT INCLUDE THE GN PAN)

- Material: stainless steel 201
- Thickness : 0.8mm
- Removable shelf distance, more flexible
- Two tiers structure, board type
- Fitted with 2 location bars
- PCS/CTN : 1pcs
- Flat pack delivery



Size(mm)	1 layer	2 layers
600×300xH580	331401	330501
800×300xH580	331402	330502
1000×300xH580	331403	330503
1200×300xH580	331404	330504
1400×300xH580	331405	330505
1500×300xH580	331406	330506
1600×300xH580	331407	330507
1800×300xH580	331408	330508
600×400xH580	331409	330511
800×400xH580	331410	330512
1000×400xH580	331411	330513
1200×400xH580	331412	330514
1400×400xH580	331413	330515
1500×400xH580	331414	330516
1600×400xH580	331415	330517
1800×400xH580	331416	330518

