



SINGLE FRYER



HLB-81A



- available in single and double version with drain tap
- solid basket and lid equipped with handgrips resistant to high temperatures
- "cold zone" system temperature control knob 60-200°C preventing burning
- removable control panel for easy cleaning



HLB-82A



HLB-83A

code	capacity	power & voltage	size
HLB-81A	6L	2500W/230V	275x435x295MM
HLB-82A	6+6L	2500W+2500W/230V	555x435x295MM
HLB-83A	12L	2500W+2500W/230V	535x435x295MM
HLB-4L	4L	2000W/230V	216x380x325MM
HLB-4L-2	4L+4L	2000W+2000W/230V	436x380x325MM
HLB-6L	6L	2500W/230V	267x415x305MM
HLB-6L-2	6L+6L	2500W+2500W/230V	550x415x305MM
HLB-8L	8L	2800W/230V	270x415x355MM
HLB-8L-2	8L+8L	2800W+2800W/230V	550x415x355MM
HLB-11L	11L	3200W/230V	325x445x355MM
HLB-11L-2	11L+11L	3200W+3200W/230V	675x445x355MM

SINGLE FRYER WITH TAP



HLB-121V



- available in single and double version with drain tap
- solid basket and lid equipped with handgrips resistant to high temperatures
- "cold zone" system temperature control knob 60-200°C preventing burning
- removable control panel for easy cleaning



HLB-122V-F004



code	capacity	power & voltage	size
HLB-121V	8L	3000W/230V	300x480x385MM
HLB-122V	8L+8L	3000W+3000W/230V	610x480x385MM



SINGLE TANK FREESTANDING ELECTRIC FRYERS



EF-161VC

EF-162VC



- high-volume 16 litre electric deep fryer with cabinet base and drain tap
- high-performance heating element with 5100 W / 380 V
- quick heating up to 200 °C
- easy to use thermostat
- long-lasting stainless steel that's easy to clean

code	capacity	power&voltage	size
EF-161VC	16L	5100W/380V	360x550x800+110MM
EF-162VC	16L+16L	5100W+5100W/380V	720x550x800+110MM

PASTRIES DEEP FAT FRYERS



- Large volume 36 liter electric fat baking device with two baskets
- Powerful, removable heating element with 9,000W/400V
- Rapid heating to 200 °C
- Easy to use thermostat With drain cock

code	capacity	power&voltage	size
HLB-36L	36L	9000W/400V	600x555x370MM

SHELF FOR DEEP FAT FRYER



- Height-adjustable feet
- High-quality and robust stainless steel construction
- Easy to assemble and disassemble
- Sturdy footing

- Size: 410 x 290 x 650mm
601 x 417 x 650mm
- Material: Stainless steel
- Carry weight: [KG] 150

code	size
CBS-G63	410x290x650MM
CBS-G64	601x417x650MM



SINGLE CONTACT GRILL



HLB-811



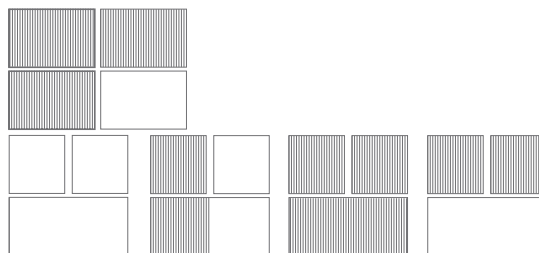
- high solid double sided ribbed working surface for perfect temperature distribution
- bottom plate with edge for comfort and hygienic work
- temperature control up to 300°C safety thermostat
- work switch and set temperature indicator
- heat resistant handle
- tray for grease and grilling residue
- available in single, double and Panini version



HLB-811E



HLB-813



code	power	Grill Size	size
HLB-811	1800W	225x230MM	305x380x205MM
HLB-811E	2200W	345x230MM	430x380x205MM
HLB-813	3600W	485x230MM	580x380x205MM

ELECTRIC COUNTER TOP GRIDDLE



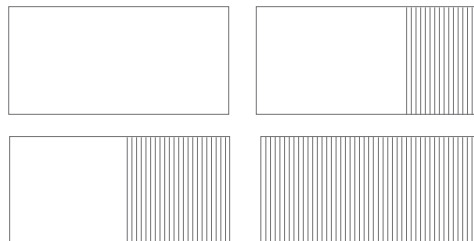
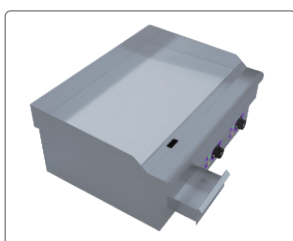
HEG-818



- Exceptional corrosion resistance and high hardness; remains intact during transport.
- Branded thermostat for precise temperature control, ensuring crispy, delicious results.
- Thickened hot plate: rapid, even heating for quality food Cast iron plate for enhanced durability.
- Thickened stainless steel holder for added sturdiness.



HEG-820



code	voltage	power	temperature range	size
GH-818	230V	3000W	50~300°C	550x490x250MM
GH-820	230V	4400W	50~300°C	730x535x250MM
HEG-818A	230V	3000W	50~300°C	542x400x220MM
HEG-818	230V	3000W	50~300°C	551x430x220MM
HEG-820A	230V	4400W	50~300°C	730x470x220MM
HEG-350	230V	2200W	50~300°C	350x520x320MM
HEG-500	230V	3000W	50~300°C	500x520x320MM
HEG-700	230V	4400W	50~300°C	700x520x320MM



PLATE CREPE MAKER



HCM-1E

- cast iron hob with teflon coating
- temperature adjustment by knob 50-300°C.
- work switch and set temperature indicator



HCM-2E



code	voltage	power	size	Plate area
HCM-400E	230V	3000W	430x430x168MM	400MM□
HCM-1E	230V	3000W	450x480x230MM	400MM□
HCM-2E	230V	6000W	860x480x230MM	400MMx2

CREPE/BBQ GRIDDLE FREE STAND SERVING STATION



- Thermostatically control to max 300°C
- Removable toughen glass guard
- Even cooking surface Øp400 & Øp500 mm diamete
- Quick heating recovering time
- Stainless steel housing and cast iron cook plat
- All accessories & waste tray are included
- Mobile service styles Optional 4" castors

code	voltage	power	size
GSS-01	230V	2700W	1036x650x1340MM
GSS-02	230V	3600W	1136x750x1340MM

CREPE/BBQ GRIDDLE FREE STAND SERVING STATION



- Thermostatically control to max 300°C
- Removable toughen glass guard
- Enlarged heating cooking area
- Even temperature distribution
- Quick heating recovering timeplate
- Reset button device on back



01

code	voltage	power	size
GSS-03	230V	1800W	900x650x465MM
GSS-04	230V	5400W	1380x650x465MM



WAFFLE MAKER



- Thick stainless steel material, high temperature corrosion resistant
- Anti-hot handle design,
- Thermostat from 50° C to 300° C,

code	voltage	power	size
UWB-1	230V	1000W	250x350x260MM
UWB-2	230V	1000+1000W	500x350x260MM

ICE CREAM CONE MAKER



- Stainless steel casting body
- Non-stick coated baking plates
- High quality heating tube for safer and better uniform heating
- Thermostat from 50° C to 300° C, 0-5 minutes timer

code	voltage	power	size
UCB-1	230V	1000W	250x350x260MM
UCB-2	230V	1000+1000W	500x350x260MM

ELECTRIC DONUTS GRILL



- Stainless steel casting body
- Non-stick coated baking plates
- High quality heating tube for safer and better uniform heating
- Thermostat from 50°C to 300° C, 0-5 minutes timer

code	voltage	power	size
RWB-2205	230V	1000W	250x350x260MM

CORN DOGS WAFFLE MAKER



- Up to 6 corn dogs per baking process
- Fully automatic thermostat with temperature range of 50 - 300 °C
- Aluminium and Teflon baking plates ensure durability
- Non-stick coating for easy removal of waffles
- Timer function for maximum 15 minutes

code	voltage	power	size
HWS-117	220-240V	1500W	360x252x230MM



ELECTRIC WAFFLE BAKER



- Stainless steel casting body
- Non-stick coated baking plates
- High quality heating tube for safer and better uniform heating
- Thermostat from 50° C to 300° C, 0-5 minutes timer



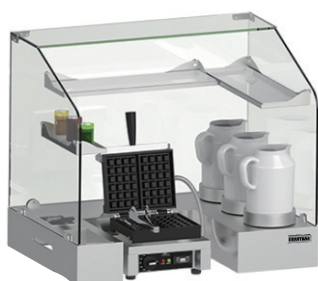
HWB-2A



HWB-1A

code	voltage	power	size
HWB-1A	230V	1600W	280x360x235MM
HWB-2A	230V	3200W	500x360x235MM

WAFFLE SERVING STATION



- Built with stainless steel
- Removable toughened glass guard
- waffle maker with timer included.
- All accessories included

code	voltage	power	size
WSA-01	230V	1600W	840x600x745MM

WAFFLE & MIX DISPENSER SERVING STATION



- Built with stainless steel.
- 8LTSS mix dispenser incinded
- waffle maker with timer included
- All accessories included

code	voltage	power	size
WSA-02	230V	1600W	840x600x745MM

MEDITERRANEAN BBO -MOBILE LED



- Thermostatically control to max 300°C
- 3/4" thick brushed steel cook plate , full rib or full flat or 1/2 rib+1/2 fat available
- Even cooking surface
- Large waste tray
- Quick heating distributing & recovering
- 2-level storage cabinet
- Front LED display

code	voltage	power	size
GSA-01	220-240V/380V	6000W+14W	1190x800x1350mm



HOT DOG GRILL



- Extremely versatile
- Easy to clean
- Efficient temperature control
- Continuous heating with two heating zones
- Hygiene and protection
- With or without glass covers and Teflon materials



code	number of rollers	voltage	power	size	remark
HHD-05	5	220-240V	1420W	585x260x490MM	with/without teflon coating on roller
HHD-07	7	220-240V	1765W	580x330x515MM	
HHD-09	9	220-240V	2200W	580x430x515MM	
HHD-11	11	220-240V	2200W	585x460x535MM	

HOT DOG/SAUSAGE BREAR WARMER



HHD-03



- Stainless steel casting body
- Non-stick coated baking plates
- High quality heating tube for safer and better uniform heating
- Thermostat from 50° C to 300° C, 0-5 minutes timer - Stainless steel tube



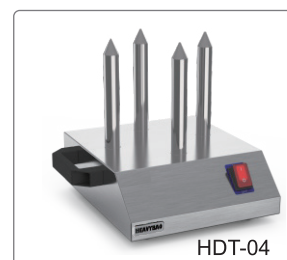
HHD-04



HHD-02



HDS-1R



HDT-04

code	voltage	power	Sticks Qty	size
HHD-03	220-240V	680W	3	460x320x375MM
HHD-04	220-240V	740W	4	460x320x375MM
HHD-02	220-240V	620W	2	280x370x375MM
HDS-1R	220-240V	500W	0	280x320x375MM
HDT-04	220-240V	240W	4	280x320x375MM



BUN TOASTER



- Bake 12 pcs bread at a time.
- Heating plate dimensions: 32×44 cm.
- Suitable bread thickness: 2 - 5.5 cm.
- Adjustable height to fit different burger buns.
- Temperature: 0 - 250°C.

code	voltage	power	size
HM-212	220-240V	2400W	385X660X330MM

CONVEYOR TOASTER



- Powerful—2,200 W toast between 180 and 720 slices of toast per hour
- Variable—7 speeds ensure individual degree of toasting
- Versatile—3 programmes for different baked goods, also ideal for burger buns
- Flexible—adjustable thanks to front and rear output
- Accessories—incl. height-adjustable feet and rack

code	voltage	power	size
ECT-150	230V	1350W	290x429x405MM
ECT-160	230V	2000W	370x420x405MM
ECT-170	230V	2700W	500x420x420MM



- Powerful – 2,200 W for optimal heat generation
- fast – prepare up to 350 pieces of toast per hour with 7 speed settings
- Variable – three selectable functions: standby, roll, bread
- Easy to clean – easy-to-clean stainless steel surfaces and crumb drawer
- Energy-efficient – stand-by mode reduces energy consumption during waiting times without cooling down completely

code	voltage	power	size
ECT-300C	220-240V	2955W	410x600x440MM

INDUCTION COOKER



- Easy to Clean with stainless steel outer shelf
- 9 levels of adjustable firepower
- High durability – sturdy and low-maintenance



code	voltage	power	size
HVB-350A	220V	3500W	325x420x105MM
HVB-350B	220V	3500W	325x420x125MM

PIZZA OVEN



EP-01



- Antirust stainless steel 201 structure ensure longer life
- U-shaped heating tube provide more quick and evenly heat-up
- Separate from temperature, easy to control independent light switch.
- Energy-insulating glass door reduces heat loss and reduces the external temperature to prevent burns
- Non-skid rubber feet prevent slipping



EP-1ST



EP-2ST

code	voltage	power	size	Baking area	temperature
EP-1ST	230V	2000W	560x560x270MM	400x400	50~350°C
EP-01	230V	3000W	770x770x270MM	600x600	50~350°C
EP-2ST	230V	3000W	560x560x430MM	400x400x2	50~350°C

COUNTERTOP CONVECTION OVEN



HPE-4S



- Versatile - perfect for pizza, buns, casseroles
- Convection - two ventilators make for perfect results with circulating warmth and a temperature of up to 300°C
- Timer for baking from 0 to 120 minutes
- 4 plates and removal handle included in delivery
- Easy to clean and maintain

code	voltage	power	Temperature	size
HPE-4S	230V	2400W	0~ 300°C	597x591x570MM



HPE-3S



- Versatile amp; compact—perfect for crispy or tender foods: for pizzas, rolls or casseroles
- Convection—temperatures up to 250 °C and circulating heat achieve best results
- Time—enables you to set the baking time from 0 to 120 min
- Accessories—three oven racks are included in delivery
- Easy-care—easy to clean and maintain

code	voltage	power	Temperature	size
HPE-3S	230V	2400W	70~250°C	505x475x375MM

KEBAB MACHINE



- for high-quality Gyros kebab, shawarma, tacos al pastor etc.
- suitable for the heating, cooking and grilling of chicken, lamb, beef, turkey, vegetable, etc.
- 6 heating elements on 3 levels with separate heating and cooling units
- even heat distribution through rotation of the Rotisserie
- maximum length of the grill spit: 730 mm
- power 6.000 W / energy-saving refractory surface of ceramic tiles

code	voltage	power	size
ES-E3	400V	6000W	680x610x1005MM

SALAMANDER GRILL



- Strong – quickly reaches operating temperature of 50 - 300 °C
- Practical – adjustable timer from 0 - 15 min
- Low-maintenance – more cleanliness thanks to drip tray for grease and crumbs
- Versatile – for gratinating, broiling, caramelising, and keeping warm
- Durable – high-quality and resistant stainless steel



AT-936



AT-937/AT-938

code	voltage	power	Net size	size
AT-936	230V	2000W	450x250MM	610x305x290MM
AT-937	230V	4000W	630x400MM	790x445x510MM
AT-938	230V	2200W	420x330MM	580x385x390MM

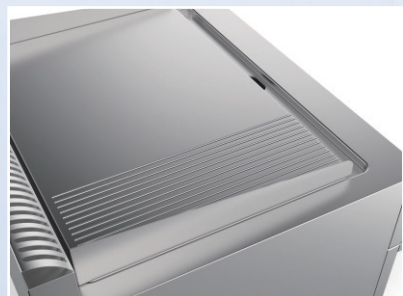
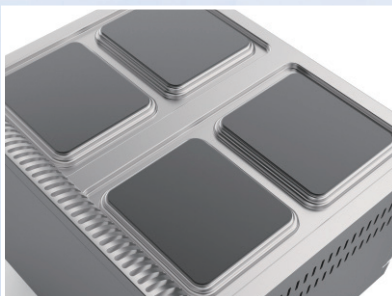


- Crumb drawer
- Adjustable height

code	voltage	power	Net size	size
HLB-450	230V	2800W	440x320MM	450x510x540MM
HLB-600	230V	4000W	590x320MM	600x510x540MM

LUXURY VERTICAL FURNACE

All Stainless Steel Body, Strong And Durable
Electronic Direct Spark Ignition, Flame Failure Safety Device For Each Control
Heavy Duty Gas Burner With Individual Switch And Thermostat Adjustable Legs
Devices Are Preset To City Gas, Natural Gas Or Lpg
Key-component From Famous International Suppliers





700/900 SERIES GAS RANGE WITH BURNERS



- Burner is made by precision forging
- High-quality anti-corrosion 304 stainless steel
- Imported thermocouple, longer life than common type at least half a year
- Dual protection design, equipped with flame failure protection and thermocouple protection device
- Pot support made of close meshed stainless steel grates (also suitable for small pots)
- Extremely low emission values, high efficiency

900 series 4-burner & 6-burner gas range with oven

The 900 series, manufactured in accordance with the European Standards. 4-burner and 6-burner gas range, robust and strong execution, stainless steel made. Newly-designed door handles. Burners manufactured from brass, making them more durable. Piezoelectric ignition system for the oven and table burners.

700 series 4-burner gas range with oven

code	Dimension (mm)	Power (KW)	Oven Power (KW)	Oven Inside Dimension (mm)	Power Range	LPG Pressure (pa)
530101	700x700x850+60	26KW+5.4KW	5.4	550x570x250	6.5KWx4	2800

700 series 6-burner gas range with oven

code	Dimension (mm)	Power (KW)	Oven Power (KW)	Oven Inside Dimension (mm)	Power Range	LPG Pressure (pa)
530102	1050x700x850+60	39KW+5.4KW	5.4	550x570x250	6.5KWx4	2800

900 series 4-burner gas range with oven

code	Dimension (mm)	Power (KW)	Oven Power (KW)	Oven Inside Dimension (mm)	Power Range	LPG Pressure (pa)
530103	800x900x850+120	24KW+5.4KW	5.4	550x680x290	6.5KWx2+5.5KWx2	2800

900 series 6-burner gas range with oven

Item no.	Dimension (mm)	Power (KW)	Oven Power (KW)	Oven Inside Dimension (mm)	Power Range	LPG Pressure (pa)
530104	1200x900x850+120	36KW+5.4KW	5.4	550x680x290	6.5KWx3+5.5KWx3	2800

700/900 SERIES GAS LAVA ROCK GRILL WITH CABINET



- Selected high-quality stainless steel, anti-corrosion
- Cooking grid manufactured from cast iron
- Indirectly heated, heating elements can be tilted out
- 2 Independently controlled cooking zones
- Gas distribution by a safety valve with thermocouple.
- Continuous heating regulation.
- All components can be easily disassembled for regular operations of maintenance and cleaning.

Gas	F7070GLC 700 series Gas Lava Rock Grill With Cabinet	F9080GLC 900 series Gas Lava Rock Grill With Cabinet
Code	530701	530704
Dimension	700x700x850+60mm	800 x 900 x850+120mm
Power	14KW	18KW
Net Weight	106KG	144KG
Grill Size	525 x 600mm	585 x700mm
Inlet Size	3/4"(φ25mm)	3/4"(φ25mm)
LPG Pressure	2800pa	2800pa
LPG Consumption	1.006 KG/h	1.65 KG/h
NG Pressure	2000pa	2000pa
NG Consumption	1.48 m3/h	2.44 m3/h



700/900 SERIES GAS / ELECTRIC FRYER



- Standard with stainless steel tank, front, sides and splashback
- Two twin-plated, mesh fry baskets with plastic coated, heat resistant handles
- Regulation by thermostat; protection against overheating
- Full pot drain valve to eliminate clogs
- 100% safety shut-off

Gas Fryer	F7070GFR 700 series Gas 2-Tank 2-Basket Fryer With Cabinet	F9080GFR 900 series Gas 2-Tank 2-Basket Fryer With Cabinet
	Code 530201	530202
Dimension	700 x 700 x 850+60mm	800 x 900 x 850+120mm
Power	22KW	31KW
Net Weight	90KG	117KG
Fry Basket Size	280 x 110 x 130mm x 2 baskets	320 x 130 x 130mm x 2 baskets
Oil Tank Capacity	(14L-16L) x 2	(17L-20L) x 2
LPG Pressure	2800pa	2800pa
LPG Consumption	1.581 KG/h	2.228 KG/h
NG Pressure	2000pa	2000pa
NG Consumption	3.175 m3/h	3.28 m3/h
Electric Fryer	F7070EFR 700 series Electric 2-Tank 2-Basket Fryer With Cabinet	F9080EFR 900 series Electric 2-Tank 2-Basket Fryer With Cabinet
	Code 530203	530204
Dimension	700 x 700 x 850+60mm	800 x 900 x 850+120mm
Power	24KW	24KW
Voltage	380V/50Hz	380V/50Hz
Net Weight	66.5KG	82KG
Fry Basket Size	280 x 110 x 130mm x 2 baskets	310 x 130 x 130mm x 2 baskets
Oil Tank Capacity	(18L-20L) x 2	(20L-23L) x 2

HOT PLATE COOKER



- Round plate, individual control.
- Large heating surface; free pot sliding without tilting.
- Excellent heat accumulation means exploitation of remaining heat and sturdy heat supply.
- Energy saving mode by temperature limit switch.
- In the 900 series, the heating elements are hermetically sealed to the working top and controlled by 3-position switches.
- The particular design and the labyrinth system of the knobs assure protection from water infiltration.

	F7070EER 700 series Electric 4-Hot Plate Cooker With Oven	F9080EER 900 series Electric 4-Hot Plate Cooker With Oven
	Code 530501	530502
Dimension	700 x 700 x 850+60mm	800 x 900 x 850+120mm
Power	14KW	20.8KW
Voltage	380V/50Hz	380V/50Hz
Net Weight	94.5KG	144KG
Electric Potential Range	1- 3 degree	1- 6 degree
Oven Inside Dimension	550 x 570 x 250mm	550 x 680 x 290mm
Oven Power	4.8KW	4.8KW



700/900 series GAS/ELECTRIC PASTA COOKER



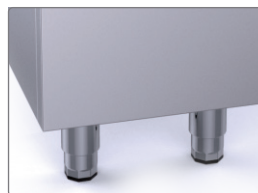
- Deep drawn safety rim to prevent foam from overflow
- Step switching with 3 heating levels, protection against overheating
- High efficiency design
- Perforated basket support plate
- Full pot drain valve to eliminate clogs
- Worktop in stainless steel
- Pressed basin with large rounded edges completely made in stainless steel.
- Water circulation guaranteed by a drilled bottom that ensures the baskets kept away from the basin base.

Gas Fryer	F7070GPC 700 series Gas Pasta Cooker With Cabinet	F9080GPC 900 series Gas Pasta Cooker With Cabinet
Code	530205	530206
Dimension	700 x 700 x 850+60mm	800 x 900 x 850+120mm
Power	13KW	15KW
Net Weight	78.5KG	100.5KG
Inlet Size	3/4"(φ25mm)	3/4"(φ25mm)
Italy Basket Size	130x260x120mmx6pcs	130x260x120mmx6pcs
LPG Pressure	2800pa	2800pa
LPG Consumption	0.934 KG/h	1.078 KG/h
NG Pressure	2000pa	2000pa
NG Consumption	1.376 m3/h	1.587 m3/h
Electric Fryer	F7070EPC 700 series Electric Pasta Cooker With Cabinet	F9080EPC 900 series Electric Pasta Cooker With Cabinet
Code	530207	530208
Dimension	700 x 700 x 850+60mm	800 x 900 x 850+120mm
Power	12KW	18KW
Voltage	380V/50Hz	380V/50Hz
Net Weight	69KG	84.5KG
Inlet Size	3/4"(φ25mm)	3/4"(φ25mm)
Italy Basket Size	130 x 260 x 120mm x 6pcs	130 x 260 x 120mm x 6pcs

700/900 series WORK TABLE WITH CABINET



- same altitude and profundity with 700 series or 900 series, perfectly combination, providing available space for cooking.



	F7035NNE 700 series Work Table With Cabinet	F9040NNE 900 series Work Table With Cabinet
Code	530401	530402
Dimension	350 x 700 x 850+60mm	400 x 900 x 850+120mm
Net Weight	32.5KG	42KG



GRIDDLE



- Each individual thermostat controls one-half of the cooking surface.
- The series griddles feature "heat bank" technology-giving you significantly faster and more evenly distributed heat than typical gas fired griddle.

Gas	F7070GDC 700 series Gas 2/3 Flat 1/3 Grooved Griddle With Cabinet	F9080GDC 900 series Gas 2/3 Flat 1/3 Grooved Griddle With Cabinet
Code	530601	530602
Dimension	700x700x850+60mm	800x900x850+120mm
Griddle Size	600x 460x16mm	700x 580 x 16mm
Power	10KW	15KW
Net Weight	92KG	140KG
LPG Pressure	2800pa	2800pa
LPG Consumption	0.72 KG/h	1.078 KG/h
NG Pressure	2000pa	2000pa
NG Consumption	1.06m3/h	1587m3/h
Electric	F7070EDC 700 series Electric 2/3 Flat 1/3 Grooved Griddle With Cabinet	F9080EDC 900 series Electric 2/3 Flat 1/3 Grooved Griddle With Cabinet
Code	530603	530604
Dimension	700x700x850+60mm	800 x 900 x850+120mm
Griddle Size	600x 460x16mm	700 x 580 x 16mm
Power	9KW	12KW
Net Weight	89.5KG	125KG
Voltage	380V/50Hz	380V/50Hz

BAIN MARIE



- Heating quickly, high efficiency, excellent thermal insulation
- Selected high-quality stainless steel, anti-corrosion
- Full pot drain valve to eliminate clogs
- Worktop in stainless steel. Incoloy stainless steel heating elements positioned out of the basin.
- Electronic regulation of power.
- Large stainless steel basin to facilitate cleaning operations.
- Front drain cock with safety system to avoid accidental opening.

F7070EBM
700 series
Electric Bain Marie With Cabinet

F0980EBM
900 series
Electric Bain Marie With Cabinet

Code	530301	530302
Dimension	700 x 700 x 850+60mm	800 x 900 x 850+120mm
Power	4KW	5KW
Voltage	380V/50Hz	380V/50Hz
Temperature Range	30~85°C	30~85°C
Pans	1/4x6" GN pans x 5pcs	1/2x6" GN pans x 2pcs , 1/4x6" GN pans x 4pcs ,
Net Weight	57.5KG	76.5KG



DESKTOP ELECTRIC GRIDDLE



CER-606

- Made of high-quality stainless steel ,corrosion resistant, rustproof and easy clean.
- The one stretch forming worktable is tough ,simple and beautiful appearance.With Smooth and flat design , will not trap dirt.
- The front plate is made of thick material and is integrally formed, with high strength, good toughness, simple and beautiful appearance, smooth and flat, and no deformation.

code	size	voltage	power	temperature
CER-606	600x650x475MM	380V	7500Wx3N	50~300°C

DESKTOP ELECTRIC GRILL



CEL-607

- Made of high-quality stainless steel , corrosion resistant, rustproof and easy clean
- The one stretch forming worktable is tough ,simple and beautiful appearance.
- With Smooth and flat design , will not trap dirt.
- With an efficient heating tube,this product is energy-saving , efficient.Ensure safety and convenience .
- Free tempreture setting is available , can adjust the cooking temperature as different cooking need

code	size	voltage	power	temperature
CEL-607	600x650x475MM	380V	7500Wx3N	50~300°C

DESKTOP ELECTRIC FRYER



CEF-608

- Made of high-quality stainless steel , corrosion resistant, rustproof and easy clean
- The one stretch forming worktable is tough , simple and beautiful appearance.With Smooth and flat design , will not trap dirt.
- With an efficient heating tube,this product is energy-saving , efficient.Ensure safety and convenience .
- Free tempreture setting is available , can adjust the cooking temperature as different cooking need

code	size	voltage	power	temperature
CEF-608	600x650x475MM	380V	11000Wx3N	60~200°C

DESKTOP ELECTRIC BAIN MARIN



CEBM-609

- Made of high-quality stainless steel , corrosion resistant, rustproof and easy clean
- The one stretch forming worktable is tough ,simple and beautiful appearance.With Smooth and flat design , will not trap dirt.
- With an efficient heating tube,this product is energy-saving , efficient.Ensure safety and convenience .
- Free tempreture setting is available , can adjust the cooking temperature as different cooking need

code	size	voltage	power	temperature
CEBM-609	600x650x475MM	230V	1500W	30~85°C



DESKTOP ELECTRIC NOODLE BOILER



CEN-6



- Made of high-quality stainless steel , corrosion resistant, rustproof and easy clean
- The one stretch forming worktable is tough ,simple and beautiful appearance.With Smooth and flat design , will not trap dirt.
- With an efficient heating tube,this product is energy-saving , efficient.Ensure safety and convenience .
- Free temperture setting is available , can adjust the cooking temperature as different cooking need

code	size	voltage	power	temperature
CEN-610	600x650x475MM	380V	9000Wx3N	30~110°C

DESKTOP FOUR-PLATE ROUND COOKING STOVE



CEQ-608



- Made of high-quality stainless steel , corrosion resistant, rustproof and easy clean.
- The one stretch forming worktable is tough ,simple and beautiful appearance.With Smooth and flat design , will not trap dirt
- Three-level temperature adjustment, you can adjust the cooking temperature as you like, suitable for the temperature needs of different objects
- Hot Plate Power 2000Wx4

code	size	voltage	power
CEQ-612	600x650x475MM	380V	8000Wx3N

EQUIPMENT STAND



CBS-G62

code	size
CBS-G62	598x520x555MM



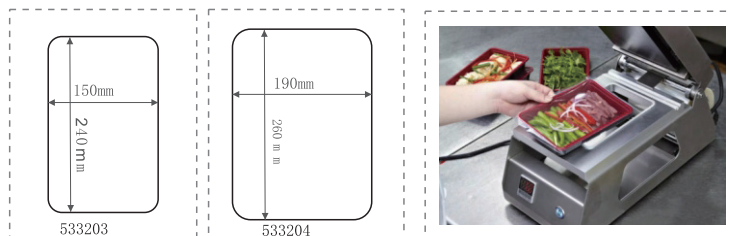


HAND PRESSURE BOX SEALING MACHINE



- Stainless steel construction
- OMRON temperature control system
- Friendly and simple in operation for user
- Cut the film around tray completely
- Mould in customized dimension is available to be made according to your special tray

Machine Max Mould



Item No.	voltage	power	size
533203	220V-240V	500W	630x256x260MM
533204	220V-240V	800W	650x296x260MM

VACUUM PACKING MACHINE



- Durable Appearance: The vacuum sealer is made of good-quality stainless steel, which is durable and has the long lifetime
- Superior Sealing Effect: The food packaging sealer machine is installed with a powerful vacuum pump, which has 280 W of motor power, and the operation rate is 4 CBM/h, which makes the sealing process efficient and quickly



code	voltage	power	mm
533201	220V	900W	570x500x530MM



EGGS & KNIVES STERILIZER



- Ideal for the disinfection of eggs
- Housing and grid made of stainless steel
- Sterilization time: 150 seconds
- The UV lamps turn off automatically upon drawer opening
- Circuit breaker protects from UV radiation
- Disinfection is performed by UV lamps
- 30 eggs or 16 knives can be disinfected simultaneously



code	CBM	voltage	power	size
HLBR001-A1	0.049	220-240V	55W	470x360x225MM

MAGNETIC RACK KNIVES STERILIZER CABINET



- Magnetic rack
- Fram:SS201,0,8mm thickness
- Green / red indicator light
- Acrylic door, brown color
- Timer adjustment
- Kill the bacterium
- UV light operated, w/o chemical residues
- Suggested operated time:30mins-60mins
- Acrylic door, effectively reject the UV light
- Operated with the UV light and the oxygen to kill the 99% bacterium
- More hygienic, safe, reliable

code	voltage	power	size
AAC25A	220-240V	8W	350x125xH590MM
AAC50A	220-240V	8W	440x125xH590MM

COMB RACK KNIVES STERILIZER CABINET



- Stainless steel comb rack
- Fram:SS201,0.8mm thickness
- Green / red indicator light
- Acrylic door, brown color
- Timer adjustment , range from 0 to 60mins
- UV light operated, w/o chemical residues
- Suggested operated time:30mins-60mins
- Acrylic door, effectively reject the UV light
- Operated with the UV light and the oxygen to kill the 99% bacterium
- More hygienic, safe, reliable
- Small size for pack 14 -16pcs knives, big size for pack 20-22pcs knives

code	voltage	power	size
AAC25A-1	220-240V	8W	350x125xH590MM
AAC50A-1	220-240V	8W	440x125xH590MM



SAUCE INSULATION MACHINE



531901



- The overall design of the equipment is novel, refined processing, beautiful.
- Automatic control, simple operation,
- Traditional internal circulation air system, with uniform distribution of smoke and heat and uniform coloring
- Temperature: 30-135° C



531902



531903

Code	voltage	power	size
531901	220-240V	80W	250x170x230MM
531902	220-240V	160W	305x250x230MM
531903	220-240V	240W	440x250x230MM

SAUCE INSULATION MACHINE



Item No.	610001	610002	610003
CAP.	4.4L	4.4L	4.4L
Spec.	Electric square shape dispenser	Electric round shape dispenser	Electric round shape dispenser



Item No.	611001	611002
CAP.	5.5L x 2	5.5L x 3
Spec.	Electric cooling dispenser 2 heads	Electric cooling dispenser 3 heads



CUP WARMER



- Practical – for preheating and keeping dishes warm
- Spacious – 3 shelves for up to 72 cups
- Efficient – two thermostats for heating both warming levels
- Well-designed – special air ducts for an even heat distribution
- Low-maintenance – quick and easy to clean

code	voltage	power	size
HCM-2F	220-240V	140W	360x320x550MM
HCM-3F	220-240V	120W	360x250x550MM

PLATE WARMER FOR



- Versatile – excellent for commercial kitchens or buffets
- Spacious – for up to 72 plates with Ø 27 cm
- Quick – short warm-up time
- Practical – fully automated thermostat
- Versatile – 3 adjustable shelves

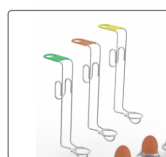
code	voltage	power	temperature	size
PW-1H	220-240V	2000W	30~85°C	970x790x1350MM



COMMERCIAL EGG BOILER



- Including colour-coded egg spoons and 4egg holders
- Reliable temperature adjustment between 30 and 110°C as well as overheating protection
- High-quality stainless steel housing-easy to clean and durable at the same time
- Perfectly suitable for self-service buffets



code	voltage	power	size
531801	220-240V	2200W	375x220x290MM
531802	220-240V	2600W	380x295x300MM
531803	220-240V	2000W	405x385x300MM

ELECTRIC NOODLE COOKER



- High Performance, it can prepare a large variety of noodles within a few minutes
- High build quality with stainless steel and integrated taps
- Several Baskets allow for a variety of possible applications



code	voltage	power	temperature	size
HEN-4A	230V	1500W x 2	30°C~110°C	530x422x300MM
HEN-6A	230V	1000W x 3	30°C~110°C	605x507x500MM
HEN-4A-BM	230V	1000W x 3	30°C~110°C	605x506x340MM

CHOCOLATE MELTING MACHINE



- The durable rust
- Water is heated
- Uniform rapid heating
- Easy to use
- The large capacity
- A wide range of applications



code	power	Food tank	size
532001	250w	1/4x150, 2pcs	345x285x295MM
532002	250w	1/2x150, 1pcs	345x285x295MM



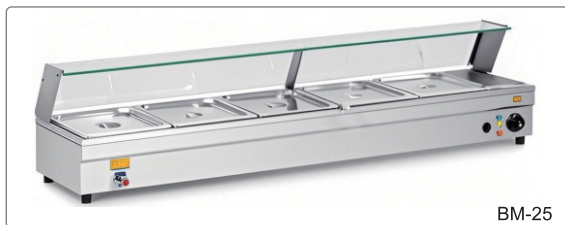
BAIN MARIE



BM-23



- High-quality stainless steel for easy handling and cleaning
- Cover made of safety glass protects against food contamination
- Drain tap for easy water drainage



BM-25

code	voltage	power	temperature range	size	remark
BM-23	230V	1500W	0°C~85°C	970x385x340MM	3 x 1/2 GN
BM-25	230V	1800W	0°C~85°C	1520x385x350MM	5 x GN - 1/2 - Drain Tap

BAIN MARIN



BBM-3A



- High quality food grade stainless steel material
- Smooth surface and easy to clean
- Good choice for commercial kitchen restaurant catering, such as hotel, restaurant, cafeteria, supermarket, fast food, bar etc.
- 3/4/5/6 pans available for option ,please find belowpicture



BM-2T



BM-4TA/BM-4T



BM-6T



BM-8T

code	voltage	power	Basin number	temperature range	size
BBM-3A	230V	1500W	1/3x150x3	30~85°C	355x555x260MM
BM-2T	230V	1500W	1/2x150x2	30~85°C	430x680x285MM
BM-4TA	230V	1500W	1/4x150x2 1/2x150x1	30~85°C	760x590x285MM
BM-4T	230V	1500W	1/2x150x4	30~85°C	760x680x285MM
BM-6T	230V	2000W	1/2x150x6	30~85°C	1090x680x285MM
BM-8T	230V	2000W	1/2x150x8	30~85°C	1420x680x285MM



ELECTRIC BAIN MARIE



HVB-BO-1D

- Single or Dual 7L pots for warming soup and food
- Temperature probe and thermostat for accurate temperature setting
- Removable pot rack fits standard steam table pans
- Drainage faucet for convenient water releasing
- U-shape heating tube for even heat distribution
- Easy cleaning and simple maintenance



HVB-BO-2D



HVB-BO-3D

code	voltage	power	Capacity	temperature range	size
HVB-BO-1D	230V	150W	4L	30~85°C	240x240x310MM
HVB-BO-2D	230V	300W	4Lx2	30~85°C	415x240x310MM
HVB-BO-3D	230V	450W	4Lx3	30~85°C	620x240x310MM

STAINLESS STEEL HOT TRAY



- For restaurants, canteens, caterers, buffets
- For keeping dishes warm
- For bain marie containers, plates and trays /Temperature range, 35-95°C
- Precise temperature control through the thermostat / Large work surface of 50x37.5cm
- Quick and precise heating element / Consistent temperature distribution



SHT-260



SHT-250



SHT-600

code	voltage	power	temperature range	size
SHT-250	230V	250W	30~95°C	500x400x70MM
SHT-600	230V	600W	30~95°C	1000x525x70MM
SHT-260	230V	260W	30~85°C	565x380x75MM

BAIN-MARIE - 6 GN - PAN



- Powerful and efficient without water thanks to total output of 1,700 W
- 6 containers with lids and meat attachment for flexibility in organising the food
- Temperature regulation up to 110 °C makes this device suitable for all types of foods
- Effective illumination for perfectly-presented dishes

code	voltage	power	temperature range	size	remark
BM-123	230V	1700W	0-110°C	1140x690x640MM	GN 1/1, GN 1/2, GN 1/3



FOOD DISPLAY WARMER CABINET



- Versatile – for displaying and keeping various dishes warm
- Spacious – space for food on 4/5 shelves
- Precise – exact and constant temperatures between 30 - 85 °C thanks to thermostat
- Practical – smooth sliding door makes it easy to remove and add food
- Easy to clean – stainless steel housing is easy to clean and durable

code	voltage	power	size	Frame
DH-580	230V	1000W	640X360X535MM/4Layers	568X300MM
DH-805	230V	1500W	865X360X625MM/5Layers	793X300MM

FOOD DISPLAY WARMER



532503/532504/532505



- 3 removable & adjustable stainless steel shelves for easy cleaning
- Heated water reservoir for humidified environment
- Sliding panels on both sides for self-service
- Suitable for food or plate warming
- Equipped with internal lamp for attractive display



532501/532502

code	voltage	power	size
532501	220-240V	1200W	660x500x620MM
532502	220-240V	1600W	1020x500x620MM
532503	220-240V	1850W	600x 460x590MM
532504	220-240V	2000W	900 x460x590MM
532505	220-240V	2200W	1200x460x590MM

FOOD DISPLAY WARMER



- 3 removable & adjustable stainless steel shelves for easy cleaning
- Heated water reservoir for humidified environment
- Sliding panels on both sides for self-service
- Suitable for food or plate warming
- Equipped with internal lamp for attractive display

code	voltage	power	size
532601	230V	400W	350x350x530MM
532602	230V	1000W	640x350x530MM
532603	230V	800W	460x355x475MM



PORTABLE FOOD WARMER



- GN 1/1 container with a capacity over 19 litres
- Efficient - 500 W halogen lamp for a constant warm keeping of food at 80 °C
- Non-slip rubber feet for a secure footing
- Easy to transport
- Stylish design and high-quality stainless steel casing
- Perfect for gastronomical use

code	voltage	power	Rotation speed [rpm]	size
HW-600	230V	500W	1100~2800	569x337x585MM

CHIP WARMER WITH INFRARED HEAT LAMP



- Efficient and quick heating with a total power of 850 W
- Separate settings for both heating elements
- Precise thermostat for a constant temperature
- Robust and easy to clean stainless steel casing



code	voltage	power	temperature	size
CW-700	230V	850W	30-90 °C	330x270x545MM

CHIP WARMER



- Wide temperature range of 30 to 90 °C
- Efficient and quick heating with a total power of 350 W
- Low-maintenance, removable slot
- Precise thermostat for a constant temperature
- Robust and easy to clean stainless steel casing

code	voltage	power	temperature	size
CW-350	230V	350W	30~90°C	370X265X268MM



HOT DOG WARMER



- Powerful—1,000-watt heating element
- Intuitive—easy operation for professional use
- Precise—temperature can be steplessly adjusted between 30 - 90 °C
- Low-maintenance—easy to clean thanks to stainless steel
- Practical—robust and compact design

code	voltage	power	temperature	size	Remarks
HD-1000	230V	1000W	30~90°C	370X265X268MM	10L

HOT DOG STEAMER



HDS-03



- Attractive presentation – colourful housing with sliding doors made of tempered glass
- Precise temperature control – wide adjustable range from 30 - 110°C
- High durability – sturdy and low-maintenance stainless steel construction
- Easy to clean – with a drain valve, removable shelf, and sliding doors



HDS-02



HDS-01

code	voltage	power	temperature range	size
HDS-01	230V	1000W	30-110°C	342x382x510MM
HDS-02	230V	2000W	30-110°C	435x382x510MM
HDS-03	230V	2400W	30-110°C	550x382x510MM

CHIP WARMER WITH INFRARED HEAT LAMP



- Efficient and quick heating with a total power of 700 W
- Separate settings for both heating elements
- Precise thermostat for a constant temperature
- Robust and easy to clean stainless steel casing

code	voltage	power	size
HW-819M	230V	700W	650x400x460MM



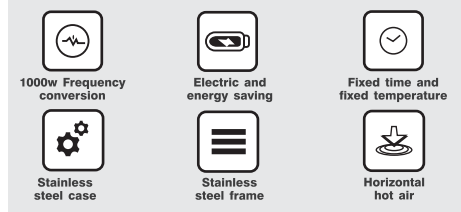
DEHYDRATOR



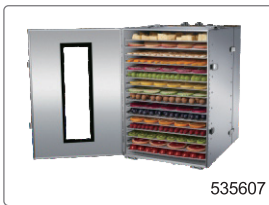
535603/535604



- Food grade 304 stainless steel racks;
- 201 stainless steel housing;
- Stainless steel with tempered glass window door;
- Aluminum alloy handle;
- Control panel with PVC finish and PF knobs.



535605



535607



535608



535510



535701



535801

Code	size (mm)	Power (w)	Shelves Qty	Temperature ranges (°C)	Grids sizes / Features
535501	410x295x290mm	500W	6	33 ~ 80°C	Grid : 290 x 290mm
535604	385x270x325mm	500W	8	20 ~ 90°C	Grid : 250 x 250mm
535605	545x420x380mm	1000W	10	40 ~ 90°C	Grid : 398 x 398mm Drying unit element removeable
535607	545x420x630mm	1350W	16	40 ~ 90°C	Grid : 398 x 398mm
535608	630x670x15150mm	3000W	15	30 ~ 140°C	Grid : Ø 500mm Rotation heating
535609	445x593x910mm	2000W	20	30 ~ 90°C	Grid : Ø 375mm Rotation heating
535610	475x355x615mm	1600W	16	40 ~ 90°C	Grid : Ø 300mm Rotation heating
535701	595x420x1420mm	3150W	32	40 ~ 90°C	Grid : 398 x 398mm
535801	870x565x1550mm	7400W	88	40 ~ 90°C	Grid : 398 x 398mm

FOOD SMOKER



532701



- Perfect for smoking fish, meat or vegetables
- Suitable for warm or hot smoking
- Space on 5/9 shelves and hooks
- Timer up to 120 minutes with alarm function
- Durable and hygienic stainless steel construction



532702

code	Grids Size	power	size	Shelves Qty
532701	395x320mm	1000W	650x450x910MM	5
532702	395x320mm	1000W	650x450x1300MM	9



SMART COOKER



HVB-Cr001



- 3000 Max RPM
huge 3000 max RPM can easily deal with daily cutting, stirring, whisking, and blending
- 4L Capacity
space-efficient 4.0L Capacity
- Multi-Function
15+ appliances in ones: steaming, mixing, grinding, cooking, heating, blending, chopping, Kneading, ice crushing, boiling, stirring, dough...etc
- Temperature Range
temperature 37°C-200°C, ±1°C



Convenient: Intelligent touch panel, easy to operate and support language change, contains different built-in recipes

Self-cleaning mode removes even the most stubborn food residue
All accessories are dishwasher safe and very easy to clean recipes



Safety Lock Design
Only when the lid is fastened does the smart cooker operate accordingly

Accessories Included
An assortment of accessories to meet your different cooking needs



HVB-Cr007



code	Capacity	voltage	Heating Power	Motor Power	size
HVB-Cr001	4L	220V-240V	1750W	500W	420x270x380MM
HVB-Cr007	4L	220V-240V	1750W	500W	420x270x380MM



FOOD MIXER



- High work efficiency: 800W motor, efficient work
- Large capacity ;7-liter bucket, suitable for various places in hotels and families
- Quite:the 1st gear operates at 50 decibels, and the 11th gear does not exceed 70 decibels.
- Easy Operate:LCD touch screen, intelligent timing function



code

HVB-K7W

voltage

220V

power

800W

size

456x310x370MM

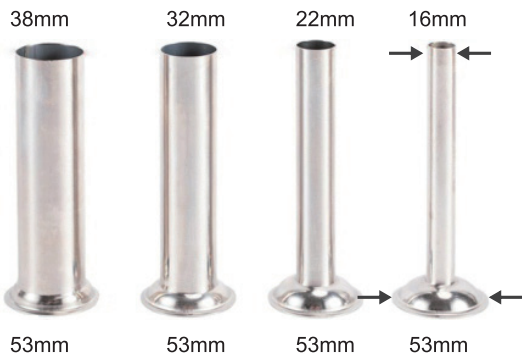
VERTICAL MANUAL SAUSAGE STUFFER



533906



- Material: stainless steel sausage stuffer
- Capacity: 3L,5L,7L,10L,12L,15L
- Style: Vertical, horizontal, screw; we have elite type and luxury stainless steel type, household type or commercial type.
- 4 different diameter stainless steel or plastic nozzles(φ16 mm, φ22 mm, φ32 mm,φ38 mm)



Code	Capacity	Height	size(mm)
533901	3/7	φ 140x200	300x340x570
533902	5/11	φ 140x320	300x340x690
533903	7/15	φ 140x460	300x340x830
533904	10/22	φ 219x270	300x330x580
533905	12/25	φ 219x320	300x330x630
533906	15/33	φ 219x400	300x330x730